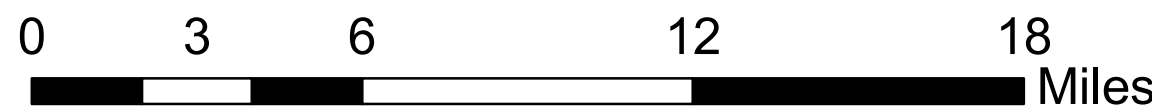
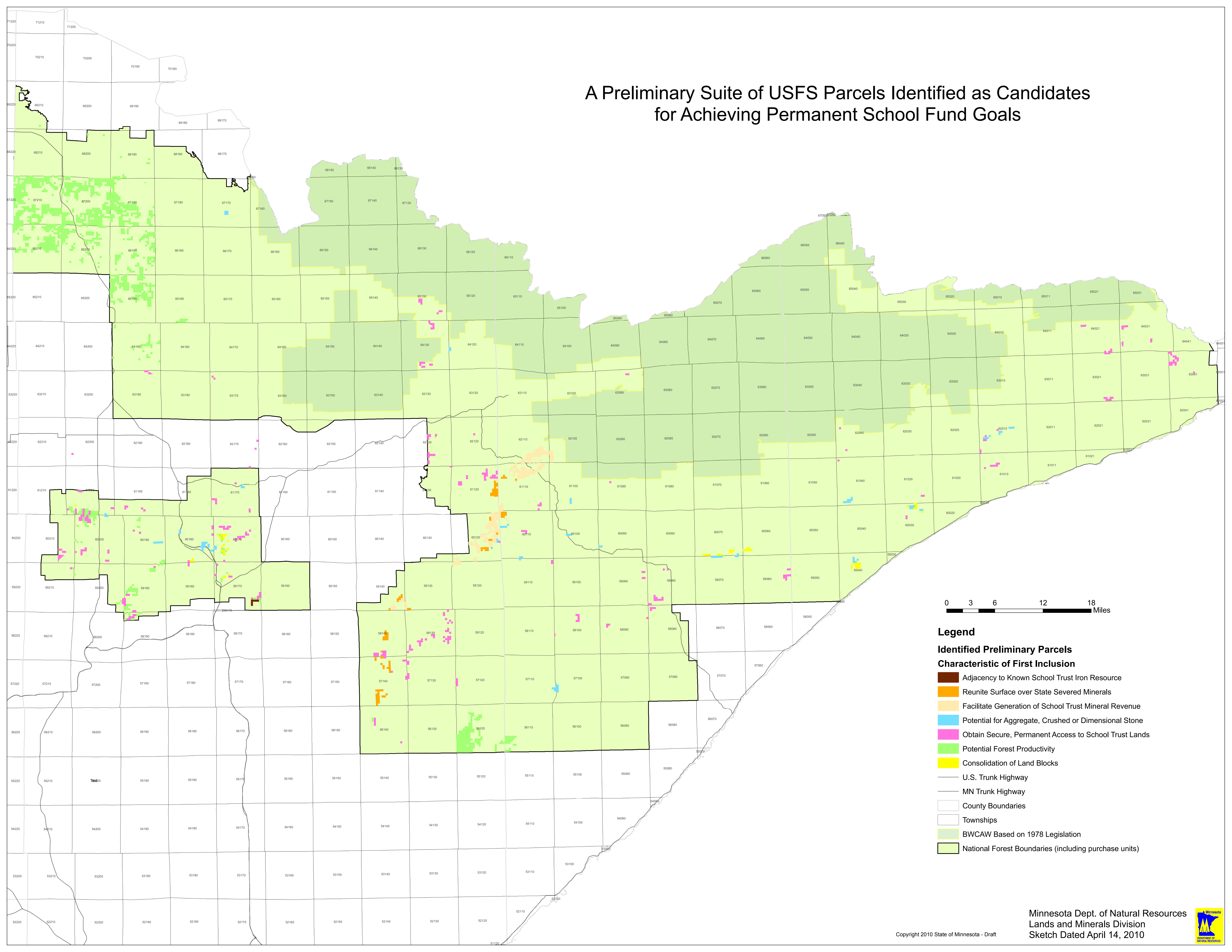


A Preliminary Suite of USFS Parcels Identified as Candidates for Achieving Permanent School Fund Goals



- Legend**
- Identified Preliminary Parcels**
- Characteristic of First Inclusion**
- Adjacency to Known School Trust Iron Resource
 - Reunite Surface over State Severed Minerals
 - Facilitate Generation of School Trust Mineral Revenue
 - Potential for Aggregate, Crushed or Dimensional Stone
 - Obtain Secure, Permanent Access to School Trust Lands
 - Potential Forest Productivity
 - Consolidation of Land Blocks
 - U.S. Trunk Highway
 - MN Trunk Highway
 - County Boundaries
 - Townships
 - BWCAW Based on 1978 Legislation
 - National Forest Boundaries (including purchase units)

